

Table of Contents

- | Salesperson
- | Property Photos
- | Property Features
- | Property Information
- | Google Map - Property Location

Salesperson

Welcome to the marketing Campaign for 62 Barolin Esplanade, CORAL COVE.

I am the selling agent and if you have any queries please do not hesitate to contact me.

[agent-firstname] [agent-lastname]

M : [agent-mobile] E : [agent-email]

[agent-photo-medium]

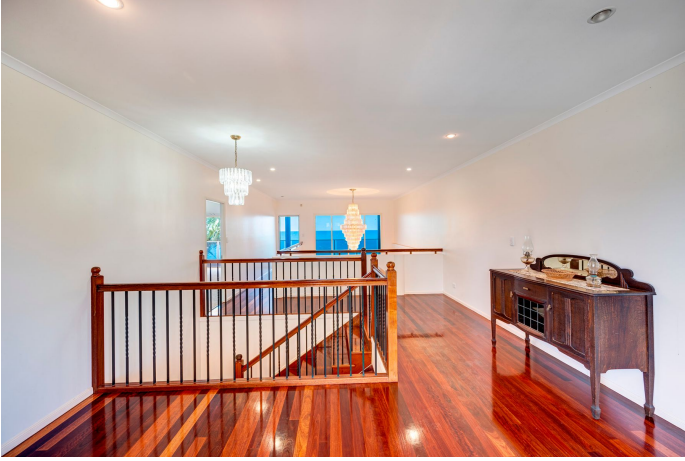
Property Photos

Photo Gallery













Property Features

Key features of the property

- ***4 Bedrooms***
- ***4 Bathrooms***
- ***3 Garages***
- ***Study***
- ***Inside Spa***
- ***Open Fire Place***
- ***Remote Garage***
- ***Balcony***
- ***Courtyard***
- ***Outdoor Entertaining***
- ***Fully Fenced***
- ***Broadband Internet***
- ***Built In Robes***
- ***Dishwasher***

Property Information



2088 sqm



62 Barolin Esplanade, CORAL COVE QLD



Yours to savour with this executive oceanfront residence, set in the most idyllic beachside community, fronting the ocean. Architecturally designed & built to perfection, nothing has been left to be desired in its former creation. Blessed with an elegant blend of neutral interiors & natural finishes which enhance this home's warmth.

Commanding a bold appearance from the street, this home will soon have you engaged, upstairs there secured by classy glass balustrade and downstairs views to the Coral Sea wide open. The wow factor starts from the outside, so you know what to expect with the inside.

A large timber door welcomes you into a grand foyer, looking throughout the lounge area and ocean views, there are ocean views from nearly every room, leaving you with unpredictable thoughts on what you will discover next.

The 9ft ceilings and doors gives you light and neutral tones creates a warm, coastal ambience one will most definitely appreciate. The large kitchen will simply blow your mind, combined with sleek white cabinetry & tasteful selection of quality appliances.

4th bathroom and laundry is at the rear of the kitchen, office & double lock up garage with ample storage complete the lower level of this expansive multi-level masterpiece.

Up the timber staircase, you will discover the main bedroom with views from the glass door and balcony overlooking the ocean, huge bathroom with shower and spa bath and large walk-in robe. And an open ceiling to the lounge showing off the chandelier. And a small balcony at the front of the house overlooking the wetlands across the street.

Then down a couple of stairs are the other 2 bedrooms, one with ocean views and own patio area and the other no view (Boo Hoo) then either through a door or through the garage is a self-contained 1 bedroom Granny flat which has its own lockup garage.

A very special home in an exceptionally special place, we would love you to know this!

A dreamy paradise awaits ♦ scuba dive out to Barolin Rocks and the artificial reef, go paddle-boarding, kitesurfing, fishing or just down the stairs to the ocean, lovely flattish rocky areas where the kids can play at low tide, short walk to the club, golf & cafe one will be sure to satisfy your daily requirements. Look at it like this. Forget the crazy life now in the city, you have way more to live for! 62 Barolin Esplanade Coral Cove is awaiting your presence & we look forward to meeting you at the property real soon!

Whilst every endeavour has been made to verify the correct details in this marketing neither the agent, vendor or contracted illustrator take any responsibility for any omission, wrongful inclusion, misdescription or typographical error in this marketing material. Accordingly, all interested parties should make their own enquiries to verify the information provided.

Any floor plan, imagery or video included in this marketing material are for illustration purposes only, all measurements are approximate and are intended as an artistic impression only. Any fixtures shown may not necessarily be included in the sale contract and it is essential that any queries are directed to the agent.

62 Barolin Esplanade, CORAL COVE QLD

Google Map - Property Location

Map

